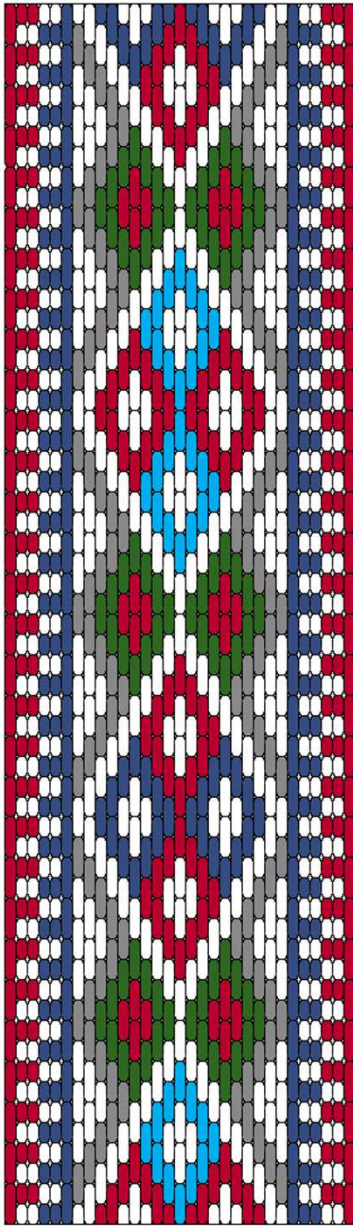


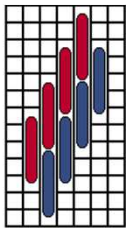
Y-019A	Embroidered Orphrey from a Sudarium		A Stitch Out of Time
Date/Period Early 15th Century	Country Germany	Museum Victoria and Albert Museum, London	Catalog Number 8662-1863



“Sudarium made of linen and embroidered orphreys, German, 1400s, with triangular velvet heading, Italian, possibly from Lucca, ca. 1400-1425”
36 thread per inch evenweave

This is a pattern taken from an orphrey decorating the sudarium. The pattern shown covers the entire width of the band.

The center section of the piece is definitely embroidered in brickstitch. The two narrow borders to either side are definitely a separate woven band on the original. However, the narrow bands are sized almost exactly to match the width you would get with the embroidery shown. I have seen woven borders on at least one other piece (see Y-008), so the border shown is for reference only.



- Red silk
- Dark blue silk
- Black silk
- Green silk
- Light blue silk
- White silk

