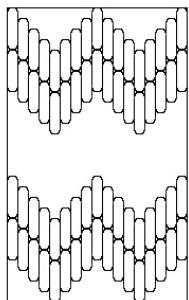
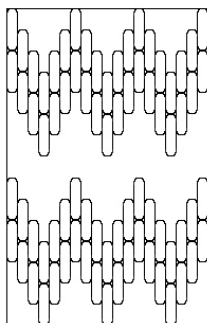
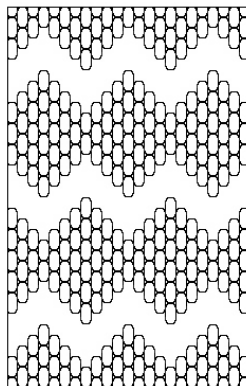
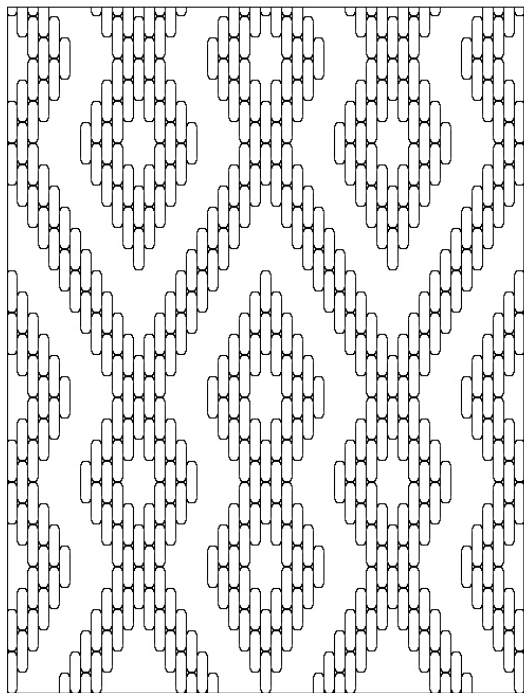
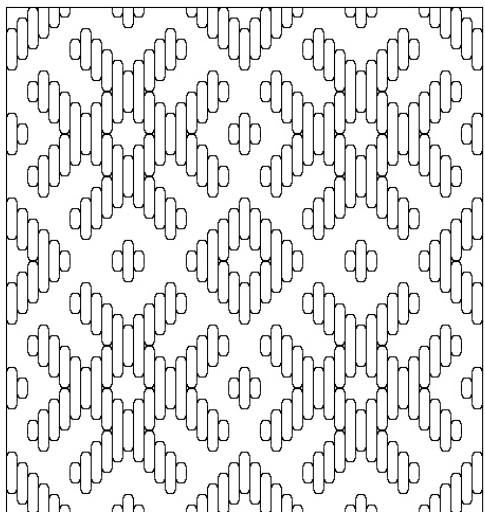
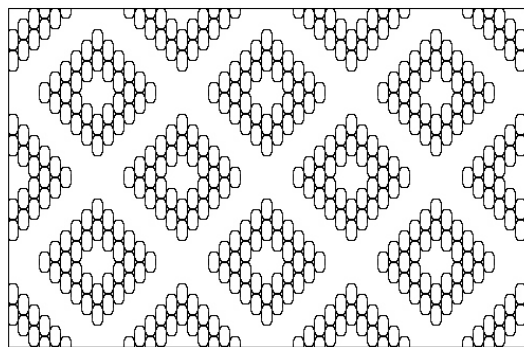
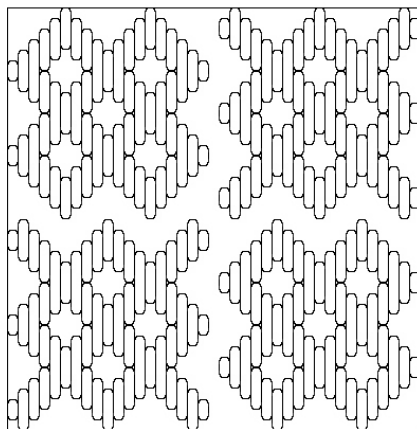
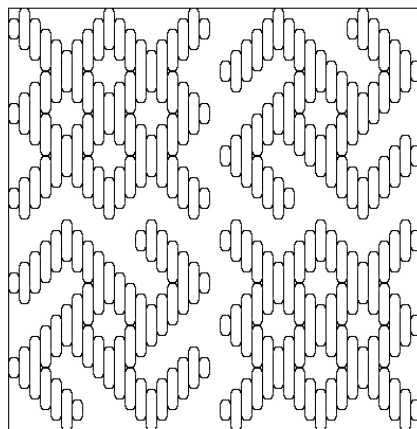


Date/Period
14th-15th CenturyCountry
GermanyMuseum
Victoria & Albert Museum, London.
Dress and Textiles Department, Reference CollectionCatalog Number
17-1873

“The Hildesheim Cope.
Linen embroidered with colored silks
and silver gilt thread in brick stitch.
German, late 13th - early 14th century.”



Notes:

The Hildesheim Cope depicts in delightfully gory detail the martyrdom of several Catholic saints. These are a selection of the designs used as fill patterns in the figures depicted.

The design for the cope was first drawn on to the ground fabric and outlined in stem stitch, then the areas were filled with brick and satin stitch. The backgrounds are solid blocks of color, and the foreground figures are set apart using contrasting color. Certain items such as clothing are filled with patterns like the ones above.