

Y-020C A Sudarium (Decorative Bands)

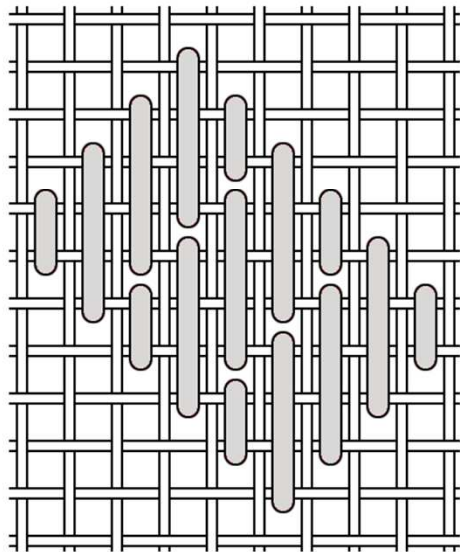
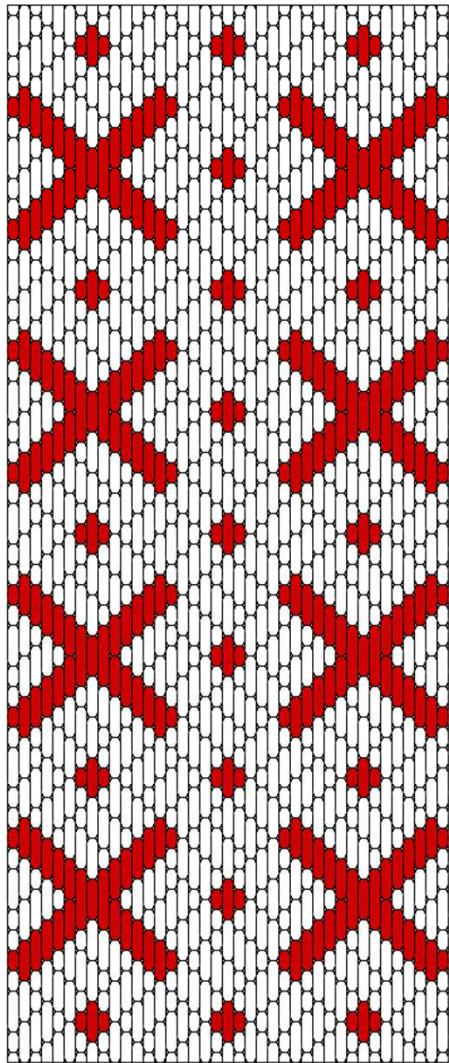
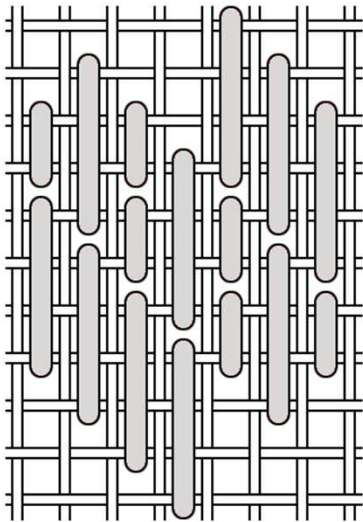
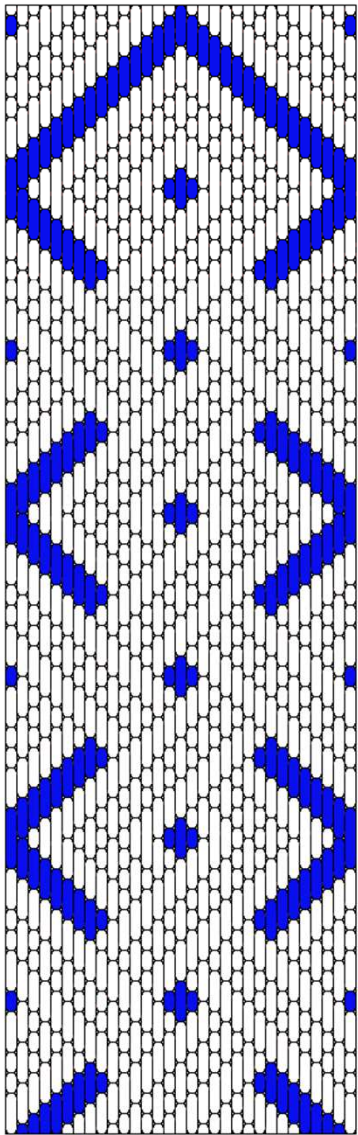
# A Stitch Out of Time

Date/Period  
Late 14th Century

Country  
Germany

Museum  
Victoria and Albert Museum, London

Catalog Number  
8279-1863



The two patterns above show the full width of the bands.

The band on the left is worked on approximately 28 thread per inch evenweave, The band on the right is worked on approximately 32 thread per inch evenweave.

The thread counts are estimated by comparing the appropriate sections of the extant photograph to the known thread count of the section graphed in Y020A.

